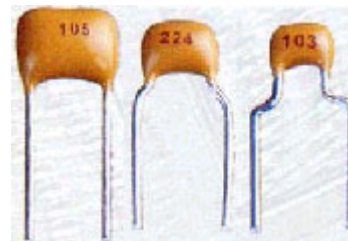


## Radial Leads Multilayer Ceramic Capacitors:



### Features

Wide capacitance, temperature, voltage and tolerance range; Industry sizes; Tape and Reel available for autoplacement; a lot of leads type available

### Radial Type Size, Capacitance and Voltage

	Size	Type	Dimensions(mm)						Voltage	Capacitance(pF)		
			F	Hmin	Lmax	Wmax	Tmax	D		COG(NPO)	X7R	Y5V(Z5U)
	0805	A1	5.0	5.0	4.2	3.8	3.8	0.5	25V	0R5~332	221~105	103~105
		B1	5.0						50V	0R5~222	221~105	103~684
		C1	2.5						100V	0R5~102	221~683	
	1206	B2	5.0	5.0	5.0	4.5	3.8	0.5	25V	0R5~682	102~105	103~105
		C2	4.0						50V	0R5~472	102~105	103~105
									100V	0R5~392	102~683	
	1210	C3	5.0	5.0	7.6	5.5	3.8	0.5	25V	561~103	102~334	104~105
			4.0						50V	561~682	102~205	104~105
		C2							100V	561~472	102~104	
	1812	C3	5.0	5.0	8.5	8.5	3.8	0.5	25V	102~153	103~474	154~335
									50V	102~103	103~334	154~225
									100V	102~682	103~224	
2225	C4	7.5	5.0	10.5	9.5	4.2	0.5	25V	102~223	103~105	684~475	
								50V	102~223	103~105	684~335	
								100V	102~103	103~474		
3035	C4	7.5	5.0	12.5	10.5	4.2	0.5	25V	102~104	103~225	105~106	
								50V	102~473	103~225	105~685	
								100V	102~333	103~105		

## How to order CT4 0805 Y 104 Z 500 A1 T

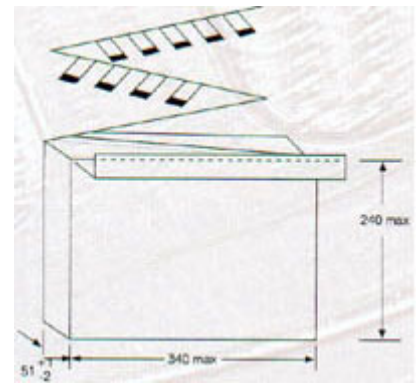
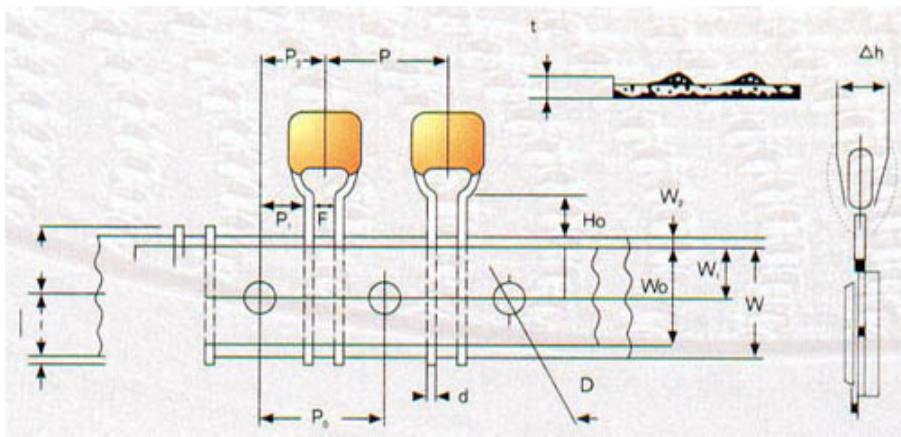
CT4	0805	Y	104	Z	500	A1	T
Type	Size	Dielectric	Capacitance	Cap. Tol.	Voltage	Leads type	Package
CC4	(mm) L×W	N=NPO	104=100000(pF)	B=±0.01pF	500=50V	A1	T =reel package
CT4 Class II	0805=2.0×1.25	B=X7R		C=±0.25pF	101=100V	B1,B2	B=Bulk
	1206=3.2×1.6	Y=Y5V		D=±0.50pF		C1,C2,C3,C4	
	1210=3.2×2.5	(Z5U)		F=±1.0%			
	1812=4.5×3.2			G=±2.0%			
	2225=5.7×6.4			J=±5.0%			
	3035=7.6×9.0			K=±10%			
				M=±20%			
				S=+50%/-20%			
				Z=+80%/-20%			

**General Specification:**

	CC4 (NPO,COG)	CT4 (X7R)	CT4 (Y5V,Z5U)
Capacitance Range	0.5pF~104		221~225
Capacitance Tolerance	B=±0.1pF	C=±0.25pF	K=±10%
	D=±0.5pF	F=±1%	M=±20%
	G=±2%	J=±5%	S=+50%~-20%
	K=±10%	M=±20%	
	B,C,D for C <10pF		
Rated Voltage	16,25, 50, 63, 100,200,500,1000,2000 VDC		16,25,50,100 VDC
Dissipation Factor(DF)	0.15%Max		2.5%Max
	(20°C,1MHZ,1VDC)		(20°C,1KHZ,1VDC)
Insulation Resistance	C≤10nF	I <sub>R</sub> ≥10000MΩ	C≤25nF
	C>10nF	I <sub>R</sub> >500Ω.F	C>25nF
Dielectric With Standing Voltage	There shall be no evidence of damage or flash over during the test.		
Termination adhesion strength	There shall be no evidence of damage or flash over during the test.		
Bending Strength	There shall be no evidence of damage or flash over during the test, capacitance tolerance shall be not more than 10%.		
Solderability	Time:	2±1s	
	Temp.:	235±5°C	
	Cover:	≥ 95%	
Resistance to Soldering Heat	Time:	5±1s	
	Temp.:	265±5°C	
	Cover:	≥ 95%	
	ΔC/C:	≤0.5% or 0.5pF	≤-5% ~ +10%
Temperature cycling	ΔC/C:	≤1%	≤± 10%
	Outlook:	There shall be no evidence of damage or flash over during the test.	
Humidity Moisture Resistance	ΔC/C:	≤2%	≤10%
	DF	0.003	0.05
	IR	R×C>25s	
	Outlook:	There shall be no evidence of damage or flash over during the test.	
T.C. Characteristics (ΔC/C)	±30ppm/°C	±15%	Z5U(E)
			Y5V(F)
Vibration	Outlook:	There shall be no evidence of damage or flash over during the test.	
Bump	ΔC/C:	≤2%	
	Outlook:	There shall be no evidence of damage or flash over during the test.	
Life test (1000hours)	ΔC/C:	≤2%	≤±12.5%
	DF	0.003	0.05
	IR	R×C>25s	R×C≥25s
	Outlook:	There shall be no evidence of damage or flash over during the test.	

# Packaging Style

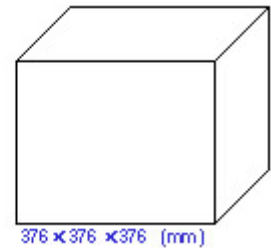
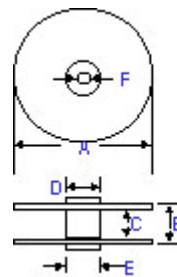
## Ammo Package



Code	P	P <sub>0</sub>	W	W <sub>0</sub>	H <sub>2</sub>	W <sub>2</sub>	H <sub>1</sub>	D	T	Δh	H	S	P <sub>1</sub>	P <sub>2</sub>	ΔP
Dimension	12.7	12.7	18	5	9	0	32.5	4	0.5	0	16-18	5	3.85	6.35	1.3
Tolerance	±1	±0.3	+1 -0.5	min	±0.5	1	Max	±0.2	±0.2	±0.2	±0.5	±0.5	±0.7	±0.4	Max

## Reel Package

A	B(Max)	C	D(Max)	E(Max)	F
355-365	50.8	38.10-46.02	102.01	86.36	25.40-30.48



## Packaging Q'ty

Ammo Package	Reel Package	Bulk
2500	4000	1000